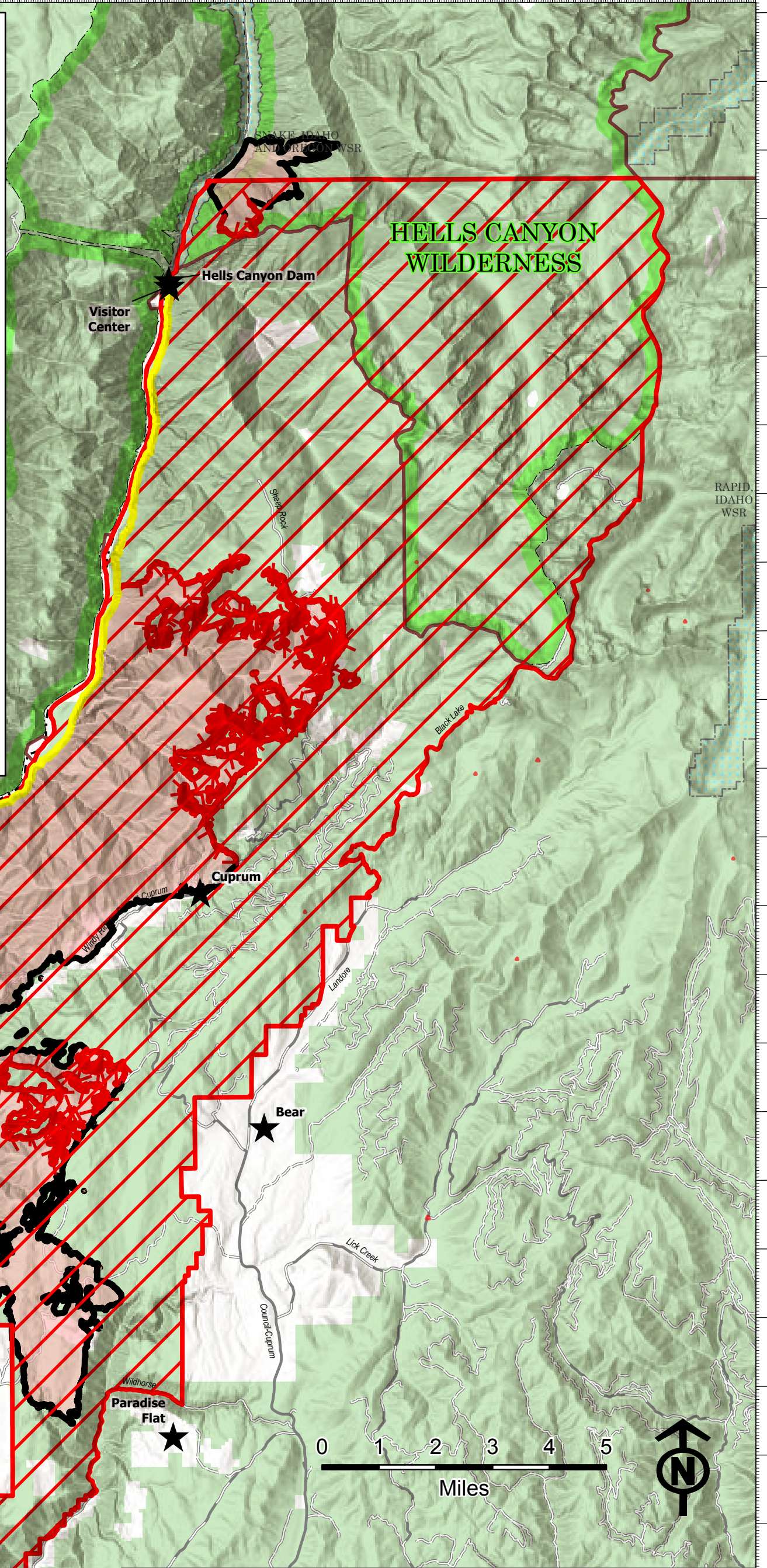
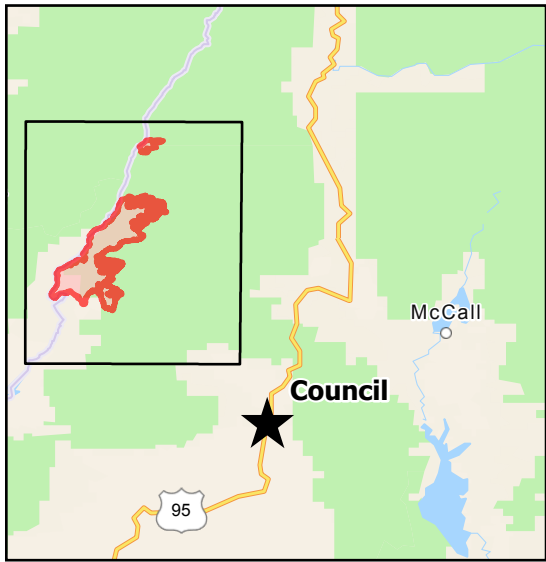


116°53.7'W 116°51.6'W 116°49.5'W 116°47.4'W 116°45.3'W 116°43.2'W 116°41.1'W 116°39'W 116°36.9'W 116°34.8'W 116°32.7'W 116°30.6'W

LIMEPOINT & CLIFF MTN. 8/20/2024

32,368 ACRES
58% CONTAINED



RAPID IDAHO WSR



- Hell's Canyon Road (NF454)
 - Area Closure Order 0412-603
 - Contained
 - Uncontained
 - Wildfire Daily Fire Perimeter
 - Administrative FS Boundary
 - Wild and Scenic River
 - USFS Wilderness
 - Bureau of Land Management (BLM)
 - Other Federal
 - State
 - US Forest Service (USFS)
 - Private
- **OPEN TO PUBLIC****

116°53.7'W 116°51.6'W 116°49.5'W 116°47.4'W 116°45.3'W 116°43.2'W 116°41.1'W 116°39'W 116°36.9'W 116°34.8'W 116°32.7'W 116°30.6'W

44°51.3'N 44°52.35'N 44°53.4'N 44°54.45'N 44°55.5'N 44°56.55'N 44°57.6'N 44°58.65'N 44°59.7'N 45°0.75'N 45°1.8'N 45°2.85'N 45°3.9'N 45°4.95'N 45°6'N 45°7.05'N 45°8.1'N 45°9.15'N 45°10.2'N 45°11.25'N 45°12.3'N 45°13.35'N 45°14.4'N 45°15.45'N 45°16.5'N 45°17.55'N 45°18.6'N

44°51.3'N 44°52.35'N 44°53.4'N 44°54.45'N 44°55.5'N 44°56.55'N 44°57.6'N 44°58.65'N 44°59.7'N 45°0.75'N 45°1.8'N 45°2.85'N 45°3.9'N 45°4.95'N 45°6'N 45°7.05'N 45°8.1'N 45°9.15'N 45°10.2'N 45°11.25'N 45°12.3'N 45°13.35'N 45°14.4'N 45°15.45'N 45°16.5'N 45°17.55'N 45°18.6'N